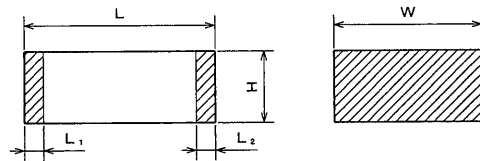


THIRD ANGLE PROJECTION

ITEM CODE	CAPACITANCE μF (*)	DIMENSIONS				TYPE
		L	W	H	L ₁ , L ₂	
ECWU 2102V16	0.001 (102)	4.8±0.2	3.3±0.3	1.4±0.2	0.35±0.2	E ₁
" 2122V16	0.0012 (122)	"	"	"	"	"
" 2152V16	0.0015 (152)	"	"	"	"	"
" 2182V16	0.0018 (182)	"	"	"	"	"
" 2222V16	0.0022 (222)	"	"	"	"	"
" 2272V16	0.0027 (272)	"	"	"	"	"
" 2332V16	0.0033 (332)	"	"	"	"	"
" 2392V16	0.0039 (392)	"	"	"	"	"
" 2472V16	0.0047 (472)	"	"	"	"	"
" 2562V16	0.0056 (562)	"	"	"	"	"
" 2682V16	0.0068 (682)	"	"	"	"	"
" 2822V16	0.0082 (822)	"	"	"	"	"
" 2103V16	0.01 (103)	"	"	"	"	"
" 2123V16	0.012 (123)	"	"	"	"	"
" 2153V16	0.015 (153)	"	"	"	"	"
" 2183V16	0.018 (183)	"	"	2.0±0.2	"	E ₂
" 2223V16	0.022 (223)	"	"	"	"	"
" 2273V16	0.027 (273)	"	"	2.4±0.2	"	E ₃
" 2333V16	0.033 (333)	"	"	2.8±0.2	"	E ₃
" 2393V16	0.039 (393)	6.0±0.2	4.1±0.3	2.0±0.2	"	D ₂
" 2473V16	0.047 (473)	"	"	2.4±0.2	"	D ₃
" 2563V16	0.056 (563)	"	"	2.8±0.2	"	D ₄
" 2683V16	0.068 (683)	"	"	3.2±0.2	"	D ₅
" 2823V16	0.082 (823)	"	5.0±0.4	3.2±0.3	"	B
" 2104V16	0.1 (104)	"	"	3.8±0.3	"	"
" 2124V16	0.12 (124)	"	"	4.5±0.3	"	"



ITEM CODE NUMBER STRUCTURE

ECWU 2102V16 (DC250V, 0.001μF, ±5%)

↑ Taping (φ330mm reel, 12mm taping)
 ↑ Capacitance tolerance (±5%)
 ↑ Capacitance
 ↑ Rated voltage (2:DC250V)

CONSTRUCTION

The capacitor is non-inductive construction, stacked with metallized plastic film dielectric, and has two outer electrodes.

PROPERTIES

Capacitance : See table at 1kHz
 Capacitance tolerance : ±5% (J)
 Rated voltage : DC250V
 Withstand voltage : DC400V for 60s
 Insulation resistance : I. R ≥ 3,000MΩ at 20°C, DC100V, for 60s
 Dissipation factor : ≤ 1.0% at 1kHz, 20°C
 Category temperature range : from -55°C to + 85°C
 (including temperature rise on unit surface)

DO NOT SCALE DRAWING REVISIONS INDICATED BY Δ ALL DIMENSIONS ARE IN MILLIMETERS

ALTERATION

ISSUE	DESCRIPTION	DATE
△	Company name changed	Oct. 1 2004
△	Company name changed	Apr. 1 2005
△	Company name changed	Apr. 1 2006
△	Company name changed	Apr. 1 2008
△	Company name changed	Apr. 1 2012
△	Company name changed	Apr. 1 2013
△	Company name changed	Apr. 1 2015

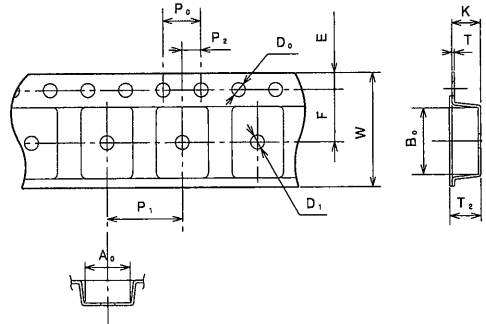
SPECIFICATIONS No.

Reference

DESIGN	<i>M. Makeda</i> M. Makeda
CHECKED	<i>M. Yamaguchi</i> M. Yamaguchi
APPROVAL	<i>Y. Takata</i> Y. Takata
ESTABLISHMENT	Jan. 13, 2001
TYPE NAME	ECWU2***V16
NAME	FILM CHIP CAPACITOR ECWU (C)
DRAWING NAME	PRODUCT DRAWING
DRAWING No.	1001C-J-E (1/2)

Toyama-Matsue Plant
 Device Solutions Business Division
 Panasonic Corporation

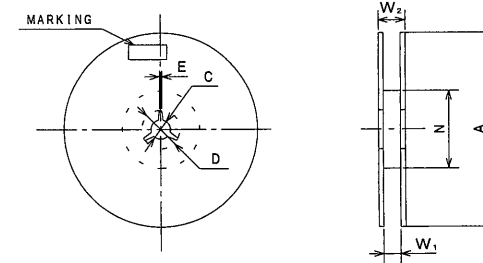
TAPING SPECIFICATION



TYPE	A ₀	B ₀	T	T ₂	K
E ₁	3.8±0.1	5.1±0.1	0.30±0.05	2.0±0.2	1.9±0.1
E ₂	#	#	#	2.6±0.2	2.5±0.1
E _{3a} , E ₃	#	#	#	3.4±0.2	3.3±0.1
D ₂	4.6±0.1	6.3±0.1	#	2.7±0.2	2.6±0.1
D ₃ , D ₄	#	#	#	3.5±0.2	3.4±0.1
D ₅	#	#	#	4.6±0.2	4.5±0.1
B	5.5±0.1	#	#	5.1±0.2	5.0±0.1

SYMBOL	DIMENSIONS	
	E ₁ , E ₂ , E _{3a} , E ₃	D ₂ , D ₃ , D ₄ , D ₅ , B
W	12.0 ±0.3	12.0 ±0.3
F	5.5 ±0.05	5.5 ±0.05
E	1.75±0.1	1.75±0.1
P ₁	8.0 ±0.1	8.0 ±0.1
P ₂	2.0 ±0.05	2.0 ±0.05
P ₀	4.0 ±0.1	4.0 ±0.1
φD ₀	1.5 ^{+0.1} / ₀	1.5 ^{+0.1} / ₀
φD ₁	1.5 ^{+0.2} / ₀	-

PACKING SPECIFICATION

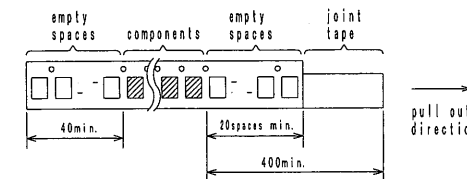


SYMBOL	DIMENSIONS
A	330.0±2.0
C	13.0±0.2
D	21.0±0.8
E	2.0±0.5
N	80.0±1.0
W ₁	13.4±1.0
W ₂	17.4±1.0

PACKING QUANTITY

TYPE	REEL (pcs.)
E ₁ , E ₂ , D ₂	3,000
E _{3a} , E ₃ , D ₃ , D ₄ , D ₅	2,000
B	1,500

EMPTY SPACE AND JOINT TAPE



Reference

NAME	FILM CHIP CAPACITOR ECWU (C)
TYPE NAME	ECWU2***V16
DRAWING No.	1001C-J-E (2/2)

Toyama-Matsue Plant
Device Solutions Business Division
Panasonic Corporation