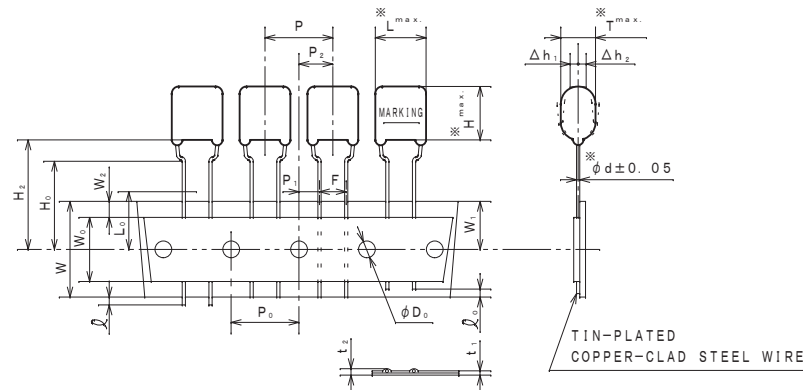
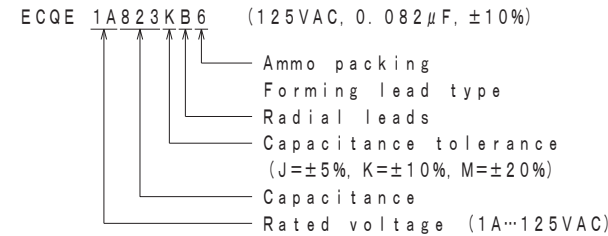


ITEM CODE	RATED VOLTAGE	CAP. (μ F)	DIMENSIONS			
			※L	※T	※H	※d
ECQE1A823 () B6	125VAC	0.082	10.3	4.6	7.6	0.5
" 1A104 () B6	"	0.1	"	5.1	7.7	"
" 1A124 () B6	"	0.12	"	5.3	8.4	"
" 1A154 () B6	"	0.15	"	5.7	8.9	"
" 1A184 () B6	"	0.18	"	5.6	10.3	"
" 1A224 () B6	"	0.22	"	6.1	11.0	"

↑TOL. SYMBOL (J, K or M)

ITEM CODE NUMBER STRUCTURE



SYMBOL	ITEM	DIMENSION	REMARKS
P	Pitch of component	12.7 \pm 1.0	Tilt of component and curvature of leads shall be included.
P ₁	Feed hole pitch	12.7 \pm 0.2	
P ₂	Hole center to lead	3.85 \pm 0.5	
P ₂	Hole center to comp. center	6.35 \pm 1.3	Tilt of component due to curvature of leads shall be included.
F	Lead-to-lead distance	5.0 \pm 0.2	
Δ h _{1,2}	Component alignment	0~2.0	Tilt of component due to curvature of leads shall be included.
W	Paper backing width	18.0 \pm 0.5	
W ₀	Adhesive tape width	9.5min.	The hold down tape shall not protrude beyond the carrier tape.
W ₁	Hole position	9.0 \pm 0.5	
W ₂	Hold-down tape position	0~3.0	
H ₂	Component height	22.0 \pm 0.75	
H ₂	Lead-wire clinch height	16.0 \pm 0.5	
↑	Lead-wire protrusion	0max.	
↓	Lead-wire depression	7.0max.	
ϕ D ₀	Feed hole diameter	4.0 \pm 0.2	
t ₁	Total tape thickness	0.7 \pm 0.2	Total thickness including the hold down tape.
t ₂	Total thickness	1.5max.	
L ₀	Length of snapped lead	11.0max.	

CONSTRUCTION

The capacitor is of non-inductive construction, wound with metallized polyester film dielectric.
The capacitor is enclosed in non-combustible epoxy resin and has two leads.

MARKING

Marking comprises capacitance, capacitance tolerance, rated voltage and date code.

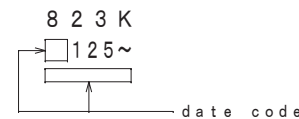
PROPERTIES

Capacitance : See table at 1kHz
 Capacitance tolerance : \pm 5% (J), \pm 10% (K), \pm 20% (M) at 1kHz
 Rated voltage : 125VAC
 Withstand voltage (terminal-terminal) : 125VAC \times 230% for 60s
 (terminal-enclosure) : 1500VAC for 60s
 Insulation resistance : \geq 2000M Ω at 500VDC, 20°C for 60s
 Dissipation factor : \leq 1.0% at 1kHz, 20°C
 Category temperature range : \triangle From -40°C to +105°C
 (including temperature rise on unit surface)

ALTERATION		
ISSUE	DESCRIPTION	DATE
\triangle 1	Company name changed	Oct. 1 2004
\triangle 2	Company name changed	Apr. 1 2005
\triangle 3	Company name changed	Apr. 1 2006
\triangle 4	Company name changed	Apr. 1 2008
\triangle 5	Change: category temperature range (-40°C~+85°C--40°C~+105°C)	Dec. 13 2010
\triangle 6	Company name changed	Apr. 1 2012
\triangle 7	Company name changed	Apr. 1 2013
\triangle 8	Company name changed	Apr. 1 2015
\triangle 9	Company name changed	Apr. 1 2022

SPECIFICATIONS No.

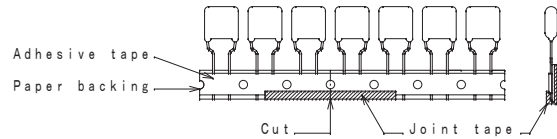
MARKING EXAMPLE



DESIGN	M. MEKADA
CHECKED	OSAKA
APPROVAL	T. KATO
ESTABLISHMENT	Sep. 12. 2001
TYPE NAME	
ECQE1A*** () B6	
NAME Metallized Polyester Film Capacitor	
DRAWING NAME	
PRODUCT DRAWING	
DRAWING No.	
1093M-J-E (1/2)	

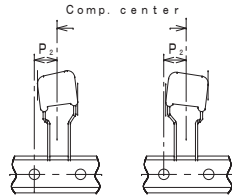
Film Capacitor Business Unit
 Device Solutions Business Division
 Panasonic Industry Co., Ltd.

- Note 1. No more than 3 consecutive missing is permitted.
- Note 2. A tape conjunction and a tape discrepancy specify as follows.



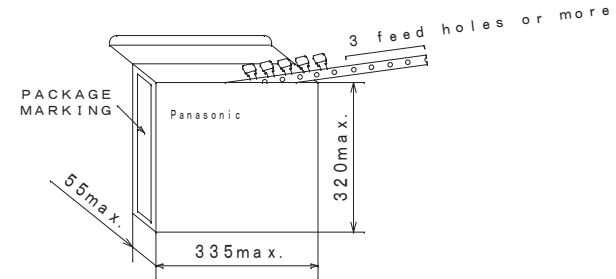
A tape sliding shall not exceed in an allowance of "P₀" dimension.
A joint tape put on the back side of paper backing, and turn up the lower part to the front.

- Note 3. Marking on components may not be the same side.
- Note 4. The tape adhesion is more than 3.92N(400gf)/25mm.
- Note 5. A tape trailer having at least 3 feed holes is required at the end of the tape.
- Note 6. 1) The P₁ and P₂ dimension shall be measured as shown in the figure after the adhesive tape placing upward.
(measuring from the center of sprocket hold to the right.)
2) The P₂ dimension shall be measured between center of a vertical shadow plane for tape plan and center of sprocket hole.



Packing specification

1. Case size
Ammo pack



2. Packing quantity

Capacitance range	Packing quantity
0.082~0.18μF	1500
0.22μF	1000

3. Handling notes

- 1) One package must be packed one product only.
- 2) The storage must be stacked 5 boxes or less (surface printed placing upward).
(For prevention from displacement of capacitors and damage of lead clipping.)
- 3) The packing box must be handled with care and never thrown out.

REFERENCE

TYPE NAME	ECQE1A*** () B6
DRAWING No.	1093M-J-E (2/2)

Film Capacitor Business Unit
Device Solutions Business Division
Panasonic Industry Co., Ltd.